



**PARTNERS LAND  
SERVICES**

[www.partnerslandservices.com](http://www.partnerslandservices.com)



**Title,  
Escrow  
& Closing  
Services**

## MEET THE TEAM



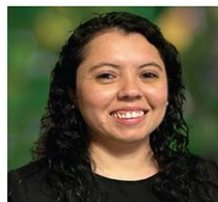
**GLENN ASHER**  
Executive Vice President, Kensington  
Vanguard National Land Services  
M: 646.296.2365 • F: 888.979.8243  
gasher@kvnational.com



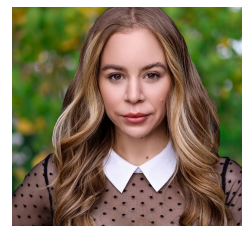
**ANGELA BANEGAS**  
Settlement Coordinator  
T: 305.702.5892 • F: 888.979.8243  
abanegas@partnerslandservices.com



**ELIZABETH AVILES, LTA**  
Settlement Coordinator  
T: 305.702.5889 • F: 888.979.8243  
eaviles@partnerslandservices.com



**DANIELA PEREZ**  
Settlement Coordinator  
T: 305.702.5891 • F: 888.979.8243  
dperez@partnerslandservices.com



**NAOMI AYALA, ESQ. (Of Counsel)**  
Real Estate Attorney  
T: 954.608.3148  
naomi@theayalafirm.com  
info@theayalafirm.com

### MIAMI-DADE COUNTY OFFICE

8400 NW 36th Street, Suite 450,  
Doral, FL 33166  
O: 305.702.5890  
F: 888.979.8243

### BROWARD COUNTY OFFICE

501 East Las Olas Boulevard 2nd &  
3rd Floor, Fort Lauderdale, FL 33301  
O: 754.755.8787  
F: 888.979.8243

### PALM BEACH COUNTY OFFICE

1615 S. Congress, Suite 103  
Delray Beach, FL 33445  
O: 561.900.3680  
F: 888.979.8243